



MPALA  
RESEARCH  
CENTRE

## CATEGORY A - Private bungalows

### *Kenyans/E. African*

**Ranch House**

*\$150*

**Jenga House**

*\$120*

**Smithsonian House**

*\$120*

### *International*

**Ranch House**

*\$150*

**Jenga House**

*\$120*

**Smithsonian House**

*\$120*

*This rate covers meals on full board (breakfast, lunch, dinner, and teas/coffee and snacks).*

*Provision of clean drinking water, daily laundry services, house keeping, WiFi.  
Provision of a house chef.*

## CATEGORY B - Private houses per person sharing

### *Kenyans/E. African*

### *International*

**Grevy house**

*\$60*

*\$75*

**Klee house**

*\$60*

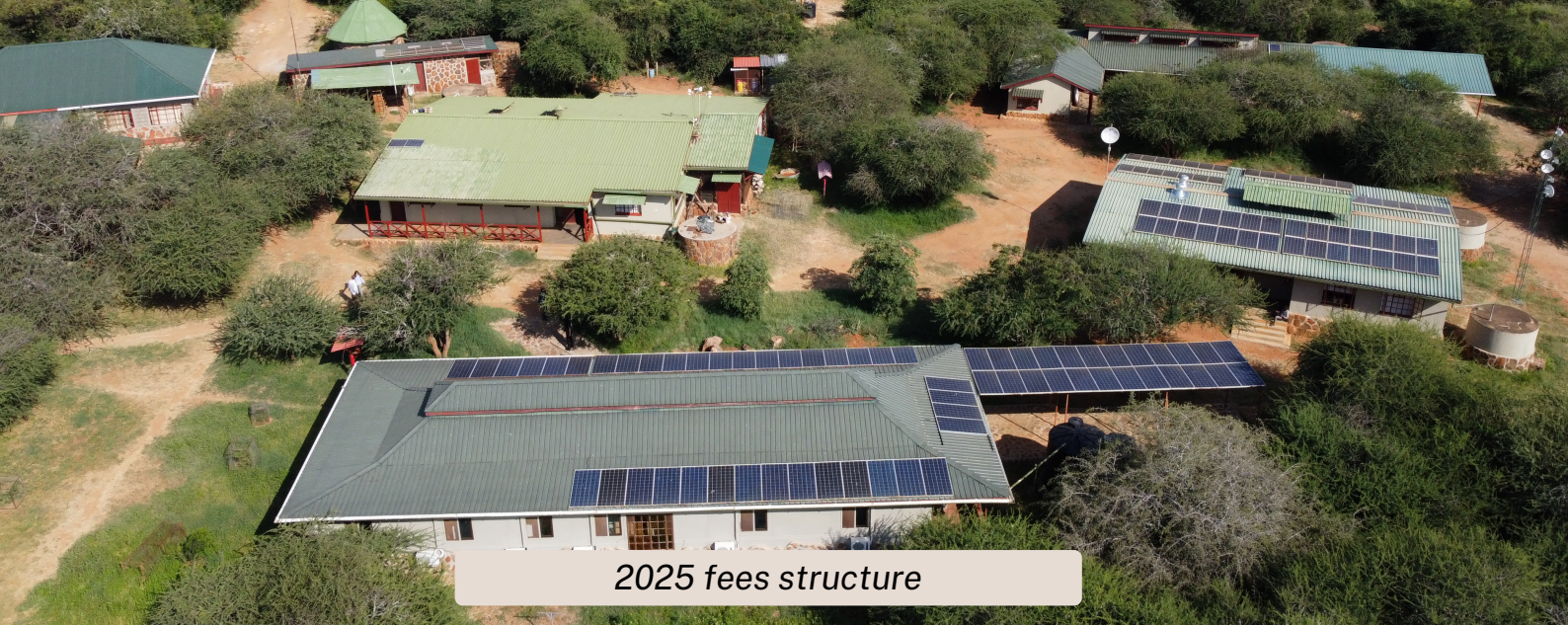
*\$75*

**Heathrow house**

*\$60*

*\$75*





### CATEGORY C - Single ensuite bandas (Bandas 3, 5, 6)



Kenyans/E. African

\$45



International

\$60

*This rate covers meals on full board (breakfast, lunch, dinner and teas/coffee and snacks). Provision of clean drinking water, laundry services for 3 days a week, house keeping, WiFi*

### CATEGORY D - Dormitories & shared accommodation



PU/Keller dorms

Kenyans/E.African  
\$30

International  
\$45



Shared bandas

Kenyans/E.African  
\$30

International  
\$45

*This rate covers meals on full board (breakfast, lunch, dinner and teas/coffee and snacks). Provision of clean drinking water, laundry services for 3 days a week, house keeping, WiFi*



## CATEGORY E - Student groups/Field Course- River camp/MRC



### Student groups

**Kenyans/E.African**  
\$30

**International**  
\$70



### Non-Student groups

**Kenyans/E.African**  
\$50

**International**  
\$80

*This rate covers meals on full board (breakfast, lunch, dinner and teas/coffee and snacks).  
Provision of clean drinking water, laundry services for 3 days a week, house keeping, WiFi  
Conference hall with a projector, access to WiFi.*

## CATEGORY F - Education & conservation documentary crew



**Kenyans/E. African**

**\$150**

**International**

**\$150**

*This rate covers meals on full board (breakfast, lunch, dinner and teas/coffee and snacks).  
Provision of clean drinking water, laundry services for 3 days a week, house keeping, WiFi  
Conference hall with a projector, access to WiFi.*

*\*\* documentary crew to pay 10% conservation fees in addition to accommodation rates.*



## CATEGORY G - Other fees

	Kenyans/E. African	International
Mpala Research Support - <b>off campus researchers</b> (per day) bench fees inclusive lunch & teas	\$15	\$35
Mpala Affiliation for <b>off campus research</b> (per person) charged annually	\$300	\$300
Mpala Affiliation for <b>on campus research</b> (pp) charged annually	\$150	\$150
Mpala land cruiser hire 8 seater (with driver) exclusive of fuel	\$100	\$100
Student day visitors (inclusive of lunch)	\$10	\$25
Technical support & supplies	at cost	at cost

	Category I	Category II
Office Space Monthly	\$150	\$200
.....		
Research Assistant Benefits. (Cost per month; covers cost of WIBA Insurance, medical, transport, normal PPE, etc.)		\$200/month
Casual wages per day (employed for < 1 month)		or \$7 per day
Statutory drone operation supervision (MRC drone pilot)		\$20 per day on site
Administration fee 10% of the total cost for individual reearchers and 15% for projects & grants		10% and 15%





## Notes

- a) Accommodation is provided on single occupancy. Double occupancy (extra person) will be billed at 75% of the applicable rate.
- b) All Direct costs from Suppliers (researcher reimbursable) will be billed as per the invoices issued plus an addition to 10% admin fee.
- c) Fuel will be issued at the recommended pump price in Nanyuki.
- d) Researchers whose cumulative accommodation aggregates a month will receive 15% discount.
- e) Researcher who may need exclusive access to a house will be required to liaise with finance department for rate concurrence.
- f) Daily research support includes access to Mpala, non-specialized labs, use of Internet, lunch and teas. This does not include transport to and from Mpala. Any additional expenses will be handled as provided under (b) above.